

# SPECIFICATION SHEET

## T3450

3-1/2" Series – Classic/Evolution

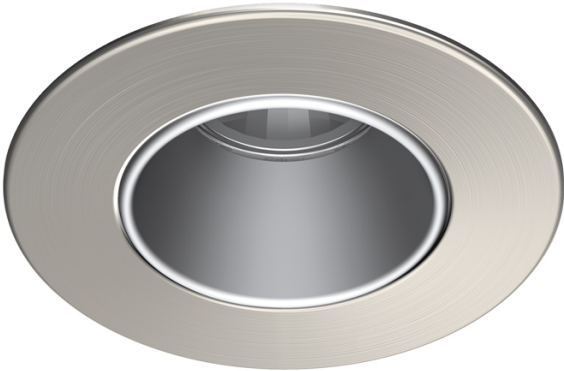
### Low Profile Regressed Trim

Project \_\_\_\_\_

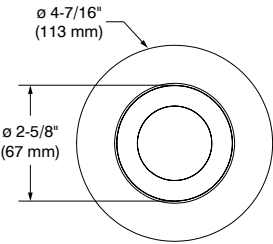
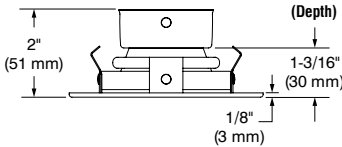
Notes \_\_\_\_\_

Fixture Type \_\_\_\_\_

Date \_\_\_\_\_



T3450-12BR (illustrated)  
(Lamp not included)



## SPECIFICATIONS

TRIM	Die-formed steel.
<i>Options in red may generate a longer production lead time</i>	<p><b>Different finishes available:</b></p> <p><b>Powder coat painted (Standard)</b> White (-01), Black (-02), Architectural Bronze (-05), Antique Cooper (-06), Matte White (-11), Matte Black (-22) and Polar Grey (-25)</p> <p><b>Plated (Premium)</b> 24K Gold Plated (-03), Chrome (-04), Brushed Chrome (-04BR), Brushed Nickel (-12BR) and Satin Nickel (-13)</p>
LAMPS (not included)	<p><b>GU10 LED 10W MAX</b>      <b>MR16 GU5.3 37W MAX</b> (Remodel and Insulated housing) (protected lamps only)</p> <p><b>MR16 LED GU5.3 10W MAX</b>      50W MAX (New Construction housing) (protected lamps only)</p> <p>If you want to use the dimming option and you use a LED lamp, please refer regularly to the lamp manufacturer compatibility list.</p> <p>For MR16 LED lamp usage, please refer to the selected housing specification sheet for details on transformer models (see compatible housing list below).</p>
CEILING CUTOUT	ø 3-5/8" (92 mm)
CERTIFICATION	cULus for <b>damp locations</b> (for LED and halogens lamps)
WARRANTY	1 year limited warranty on components against manufacturing defects

# CONTRASTE

# T3450

## 3-1/2" Series – Classic/Evolution

### Low Profile Regressed Trim



#### SPECIFICATIONS (CONT'D)

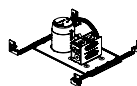
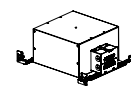
##### REFLECTORS

**STANDARD: Anodized Aluminum****OPTIONS:****Specular**Black (**BK**)Clear (**CL**)**Paint**White (**-01**)Black (**-02**)Matte White (**-11**)

##### ACCESSORIES

**Goof Rings** (see ordering code)**Opening Adaptor** (see ordering code)**Choice of optional lenses to customize your lighting:** (see ordering codes)**Clear (C):****Frosted (F)****Honeycomb (H):** the honeycomb louver reduces glare**Linear (L):** the linear lens directs the lamps beam to create a strip of light**Prismatic (P):** the prismatic lens diffuses and spreads the light in an even overall pattern**Solite (S):** the solite lens softens the light in an even overall pattern**Although not dangerous, the use of a 49 mm lens in conjunction with an LED lamp can result in overheating of the latter, reducing its lifespan.****Contrast cannot be held responsible for the overheating of LED lamps used with accessory lenses.**

##### COMPATIBLE HOUSINGS

**Remodel Housing****New Construction Housing****Insulated Housing**

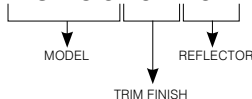
	<b>IC / Air Tight</b>	<b>IC / Air Tight</b>	<b>IC / Air Tight</b>
<b>LED</b> 10W	RE35GU10-10W RE35MR16-120-10W RE35MR16-277-10W	NW35GU10-10W NW35MR16-120-10W NW35MR16-277-10W	IC35GU10-10W IC35MR16-120-10W IC35MR16-277-10W
	<b>Non-IC / Non Air Tight</b>	<b>Non-IC / Non Air Tight</b>	<b>IC / Non Air Tight</b>
<b>HALOGENS</b> 37W/50W	RE35MR16-120-37W RE35MR16-277-37W	NW35MR16-120-50W NW35MR16-277-50W NW35MR16-120D-50W NW35MR16-277D-50W	IC35MR16-120-37W IC35MR16-277-37W IC35MR16-120D-37W IC35MR16-277D-37W

# CONTRASTE

# T3450

**3-1/2" Series – Classic/Evolution****Low Profile Regressed Trim**

## CODIFICATION EXAMPLE

**T 3 4 5 0 - 0 1 - 0 1**

## ORDERING CODES

*Options in red may generate a longer production lead time.*

MODEL	TRIM FINISHES	REFLECTORS
<b>T3450</b>		
<b>T3450</b>	<b>POWDER COAT PAINTED (Standard)</b>	<b>ANODIZED</b>
	-01 White	<b>Standard :</b> Anodized Aluminum
	-02 Black	
	-11 Matte White	
	-22 Matte Black	
	-25 Polar Grey	
	-05 Architectural Bronze	<b>CL</b> Clear
	-06 Antique Copper	<b>BK</b> Black
	<b>PLATED (Premium)</b>	<b>PAINT</b>
	-04BR Brushed Chrome	-01 White
	-12BR Brushed Nickel	-02 Black
	-03 24K Gold Plated	-11 Matte White
	-04 Chrome	
	-13 Satin Nickel	

## OPENING ADAPTOR

Can lip adaptor for 3-1/2" (89 mm) pot in a 4-1/4" (108 mm) opening.

Finish: Galvanized Steel

**Code: 312296**

Outside diameter: ø 4-5/16" (110 mm)

Inside diameter: ø 3-5/8" (92 mm)

# CONTRASTE

# T3450

3-1/2" Series – Classic/Evolution

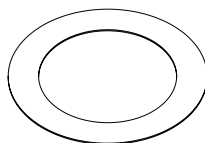
## Low Profile Regressed Trim



### GOOF RINGS

Goof rings correct the openings too large or damaged ceiling cutout.

All goof rings are available in all Contraste finishes.  
Add finish color code at the end of the goof rings code.  
Ex.: RON3000-06



**Code: RON3000**

Outside diameter: ø 6-1/8" (156 mm)  
Inside diameter: ø 3-5/8" (92 mm)

### LENSES (49 MM)

For a modification of the light distribution.

Clear (C): **103104**  
Frosted (F): **304826**  
Honeycomb (H): **103089**  
Linear (L): **103092**  
Prismatic (P): **103095**  
Solite (S): **103098**



# CONTRASTE