

# SV STRIP T5

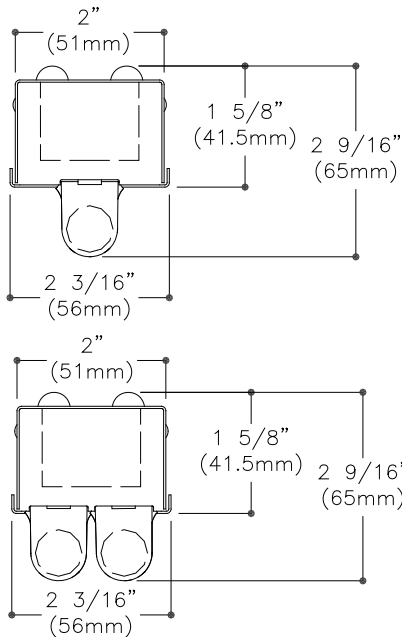
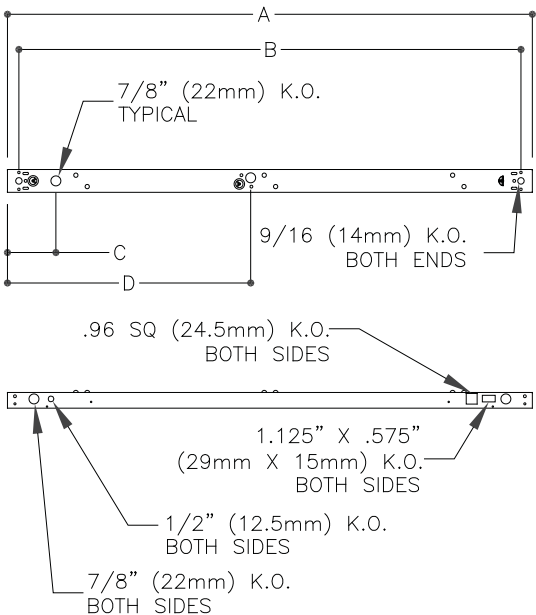
STRIP T5 2" WIDE 1 3/8" DEEP  
22", 34", 46" and 92" LENGTHS 1 OR 2 LAMP, T5

## Features

- Only 2" wide
- Utilizes compact, high efficiency, T5 or T5HO lamps
- Fully enclosed wiring
- Optional white or specular, symmetric and assymmetric reflector.
- Convenience outlet and switch K.O.s provided
- Push through lamp holders with rotor for secure lamp retention.
- Optional hangers and wires guards



## Dimensions



Nom.Length	A	B	C	D
92"	92 1/4" (2343mm)	90 3/16" (2291mm)	4 1/4" (108mm)	44 7/16" (1129mm)
46"	46 1/8" (1172mm)	44 1/16" (1119mm)	4 1/4" (108mm)	21 3/8" (543mm)
34"	34 1/4" (870mm)	32 3/16" (818mm)	4 1/4" (108mm)	N/A
22"	22 7/16" (570mm)	20 3/8" (518mm)	4 1/4" (108mm)	N/A

## Job Information

## Type:

**Job Name:**

**Cat. No.:**

**Lamp(s):**

**Volts/Ballast:**

