



UNIVERSAL LED HIGH BAY



FLV Series 150W 25 000 Lumen

One single **UNIVERSAL** product for all your needs

- Canadian Universal Voltage 120 – 347V
- Adjustable between 2 500 and 25 000 Lumen



QUALITY IS IN THE DETAILS

ADJUSTABLE LUMEN OUTPUT

The manual dimmer allows for easy light level adjustment on site.

Option: A motion sensor with remote control allowing various adjustments for greater energy and cost savings.

PREMIUM QUALITY LED

High efficiency LED offers unparallel energy savings and longer lifespan.

ALUMINIUM LED BOARD

Allowing for optimal LED cooling and a longer lifespan.

UNIVERSAL DRIVER

Voltage range of 120 - 347V, supplied with a 6' cord.

ALUMINIUM HEAT SINK

This engineered aluminium extrusion is anodised and acts as an excellent heat sink

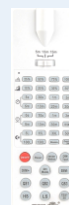
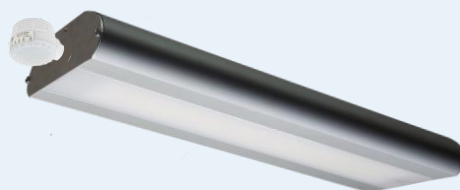
Elegant look • Easy maintenance

The unique FLV design makes the driver invisible from the ground level. This distinct feature also makes it easy to change the driver !



Motion sensor with remote control (option)

Flexible and customizable light level and delays.



ULTRA-FLEXIBLE: ALWAYS THE RIGHT PRODUCT IN STOCK

- ✓ **Always the right product in stock:** One single product can replace up to 10 different models !
- ✓ **Canadian universal voltage 120-347V**
- ✓ **On site adjustable light levels**
- ✓ **Replace high-bays 400W, 6T8 et 4T5HO and save !**
- ✓ **Motion sensor (option) with remote control for more savings**
- ✓ **Suitable for damp locations**
- ✓ **5-Year warranty**





UNIVERSAL HIGH BAY



FLV Series 150W 25 000 Lumen



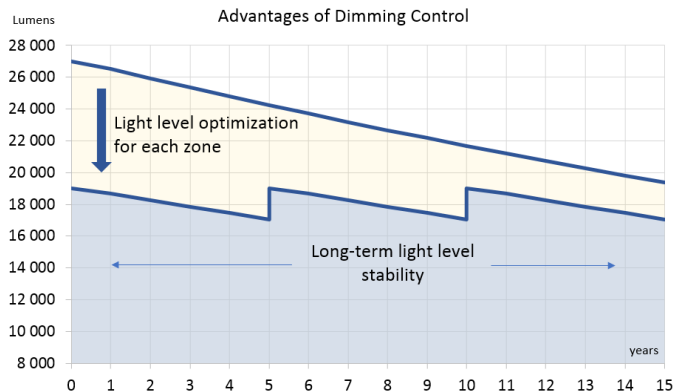
One single **UNIVERSAL product** for all your needs

- Canadian Universal Voltage 120 – 347V
- Adjustable between 2 500 and 25 000 Lumen

RATINGS

| Model no. | Lumen adjustable output (±10%) | Input Power (±10%) | Voltage | Relative intensity at 25°C | | CCT / CRI | Adjustable lighting levels |
|------------------------------|--------------------------------|--------------------|------------|----------------------------|-----------------|------------|---|
| | | | | After 50 000 h | After 100 000 h | | |
| FLV - 150 – 3500K - LV – MD | 2 500 - 25 000 | 165 W | 120 - 347V | 86% | 74% | 3500K / 80 | Manual dimmer |
| FLV - 150 – 4000K - LV – MD | | | | | | 4000K / 80 | |
| FLV - 150 – 5000K - LV – MD | | | | | | 5000K / 80 | |
| FLV - 150 – 3500K - LV – DOC | 2 500 - 25 000 | 165 W | 120 - 347V | 86% | 74% | 3500K / 80 | Motion sensor (remote control required) |
| FLV - 150 – 4000K - LV – DOC | | | | | | 4000K / 80 | |
| FLV - 150 – 5000K - LV – DOC | | | | | | 5000K / 80 | |
| RC-MK remote for DOC | | | | | | | |

- The typical Lumen may be affected by the CCT and ambient temperature.
- Remote control RC-MK (sold separately)
- Operating temperature: -40°C to 40°C
- Warehousing temperature: -40°C to 60°C



WEIGHT AND DIMENSIONS

| Model | Length | Width | Height | Weight |
|-----------------|--------|--------|--------|--------|
| FLV – 150 - MD | 480 mm | 170 mm | 58 mm | 6 lb |
| FLV - 150 - DOC | 545 mm | 170 mm | 58 mm | 6 lb |

