

TECHNICAL INFORMATION BULLETIN

CIRCLINE

Ordering Information

Order code: 58988
Description: FC16T9/CW/RS/4P/STD
UPC: 69549589889
Case quantity:



Performance Data

Initial lumens (lm): 3 150
Mean lumens (lm): 2 585
Nominal efficiency (lm/W): 79
Wattage (W): 40
Colour temperature (K): 4 100
CRI: 82
Average life (hrs): 10 000

¹ The life rating indicated is based on 3 hour burning cycles under specified conditions and with ballast meeting ANSI specifications.

Lamp Characteristics

Shape: T9 Circline
Base: G10q-4
Diameter: 1 ³/₁₆ in. (30 mm)
Nominal length: 16 in. (406 mm)
Starting method: Rapid Start
TCLP compliant: Yes
Phosphor composition: Triphosphor
Cathode guard: Yes
Nominal lamp operating frequency (Hz): 60
² Minimum starting temperature (°C): -10
Operate on electronic or magnetic ballasts

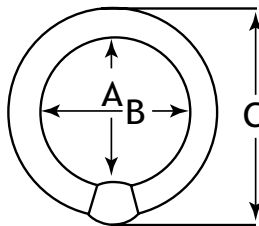
Benefits

One system Lamp/Ballast Warranty.
Extended lamp warranty from 2 to 3 years and ballast warranty from 3 to 5 years.



² The minimum starting temperature is a function of the ballast. The minimum starting temperature is based on a STANDARD brand T9 Instant Start ballast.

Dimensions



A Max	B Min/B Max	C Max
Inner diameter from base to tube	Inner diameter from tube to tube	Outer overall diameter from base to tube
40 watts		
13.68 in. 347.5 mm	13.32 in./ 13.6 in. 338.5 mm/ 345.5 mm	15.88 in./ 403.5 mm

Spectral distribution

