



MasterClass InstantFit (UL Type-A) T8

15.5T8/MAS/48-840/IF25/P/DIM 25/1

The MasterClass InstantFit T8 lamps provide hassle-free installation with simple lamp-for-lamp replacements. They deliver what we promise, with at least 40% energy savings, flicker-free performance, and the life you would expect. Other lamps claim compatibility but only MasterClass InstantFit (UL Type A) has been proven to work with over 200 ballasts and drivers, delivering even light output, with proven energy savings and a long average lifetime. End users will be delighted being under these comfortable and high quality lamps with no visible flicker and optimized optics. Energy managers will enjoy these lamps too as they can count the savings delivered by our lamps. To enjoy more energy savings, the MasterClass InstantFit lamps can be paired with the Advance TLED drivers to create a Type C system. With available 70,000 hour life, 7-year limited warranty and a shatter-prevention polycarbonate lens, Philips MasterClass InstantFit TLED lamps deliver benefits for all.

Product data

General Information		Light Technical	
Cap-Base	G13 [Medium Bi-Pin Fluorescent]	Luminous Flux	2,500 lm
Nominal lifetime	70,000 hour(s)	Luminous Efficacy (rated) (Nom)	161 lm/W
Switching Cycle	50,000	Color Designation	Cool White (CW)
Lighting Technology	LED	Correlated Color Temperature (Nom)	4000 K
		Color Consistency	<6
		Color rendering index (CRI)	80
		LLMF At End Of Nominal Lifetime (Nom)	70 %
Color Code	840 [CCT of 4000K]		
Beam Angle (Nom)	180 degree(s)		

MasterClass InstantFit (UL Type-A) T8

Operating and Electrical	
Line Frequency	20K to 120K Hz
Input Frequency	20K to 120K Hz
Power Consumption	15.5 W
Lamp Current (Max)	320 mA
Lamp Current (Min)	60 mA
Wattage Equivalent	32 W
Starting Time (Nom)	0.5 s
Warm-up time to 60% light	0.5 s
Power Factor (Fraction)	0.9
Voltage (Nom)	120-277,347 V
UL Type	UL Type A

Temperature	
Ambient temperature range	-20 °C to 55 °C
T-Case Maximum (Nom)	40 °C

Controls and Dimming	
Dimmable	Only with specific dimmers

Mechanical and Housing	
Bulb Finish	Frosted
Bulb Material	Plastic
Product Length	1,200 mm

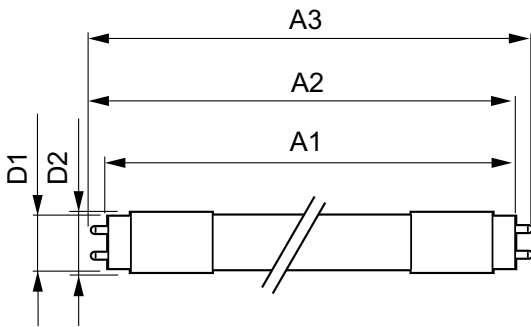
Bulb Shape	T8
------------	----

Approval and Application	
Energy Saving Product	Yes
Approval Marks	RoHS compliance UL certificate DLC compliance
Energy Consumption kWh/1000 h	- kWh
EU RoHS compliant	Yes

Application Conditions	
can it be used in closed luminaires	Yes

Product Data	
Order product name	15.5T8/MAS/48-840/IF25/P/DIM 25/1
Full product name	15.5T8/MAS/48-840/IF25/P/DIM 25/1
Order code	929002016404
Material Nr. (12NC)	929002016404
Numerator - Quantity Per Pack	1
Net Weight (Piece)	0.165 kg
EAN/UPC - Product/Case	046677545192
Numerator - Packs per outer box	25
EAN/UPC - Case	50046677545197

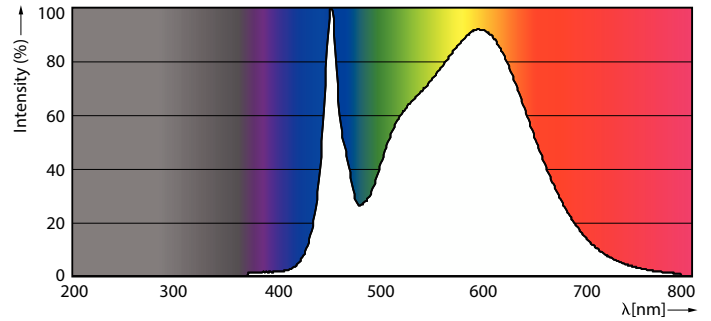
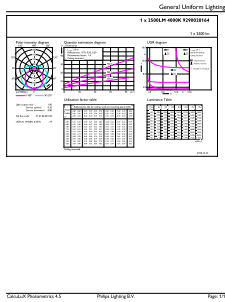
Dimensional drawing



Product	D1	D2	A1	A2	A3
15.5T8/MAS/48-840/IF25/P/DIM 25/1	25.7 mm	28 mm	1,198.1 mm	1,205.2 mm	1,212.3 mm

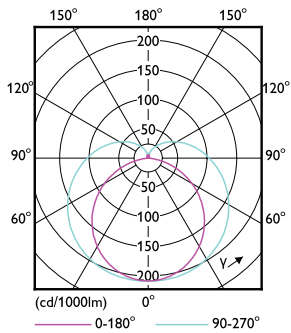
MasterClass InstantFit (UL Type-A) T8

Photometric data



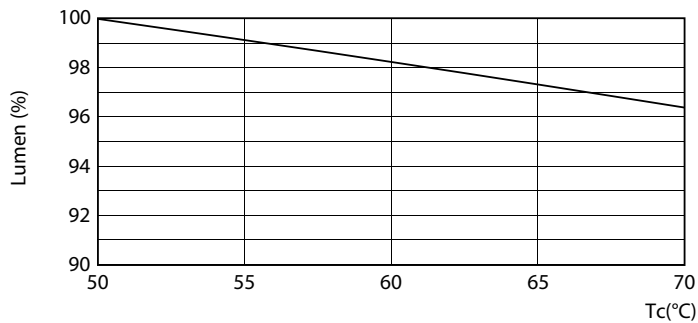
General uniform lighting - 15.5T8/MAS/48-840/IF25/P/DIM 25/1

Spectral Power Distribution Colour - 15.5T8/MAS/48-840/IF25/P/DIM 25/1

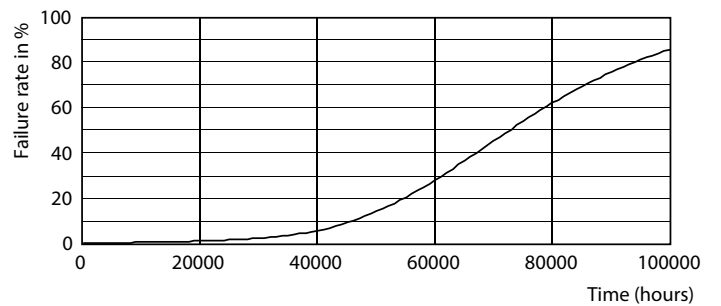


Light Distribution Diagram - 15.5T8/MAS/48-840/IF25/P/DIM 25/1

Lifetime



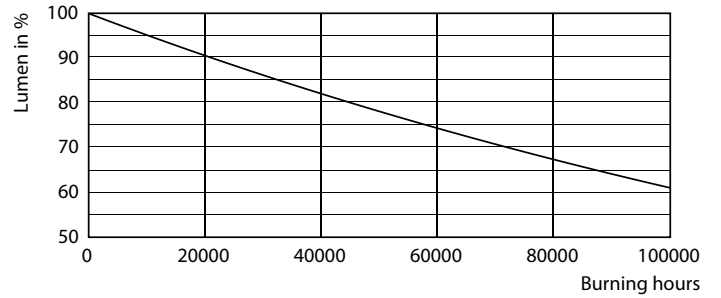
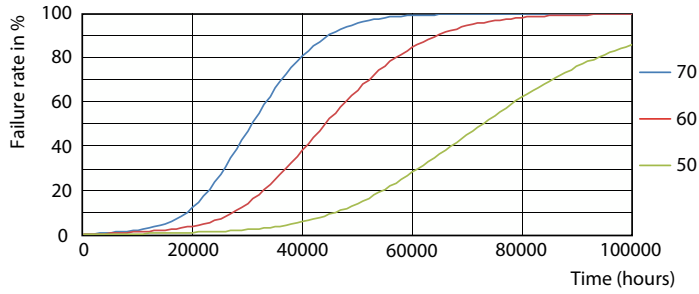
Lumen Maintenance Diagram - 15.5T8/MAS/48-840/IF25/P/DIM 25/1



LEDtube 15,5W G13 T8

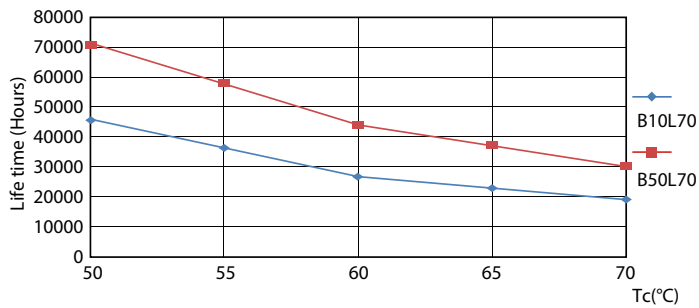
MasterClass InstantFit (UL Type-A) T8

Lifetime



LEDtube 15,5W G13 T8 FailureRate

Lumen Maintenance Diagram - 15.5T8/MAS/48-840/IF25/P/DIM 25/1



LEDtube 15,5W G13 T8 LifetimeVsTc

