



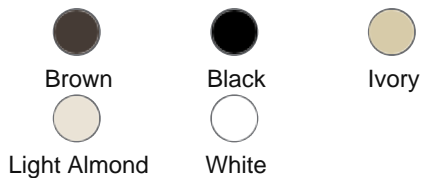
**Color :**  Gray

**UPC Code :** 078477438213

**Country Of Origin :** United States

**NEMA :**  5-15R

#### Available Colors :



## T5325-GY

15 Amp Decora Tamper-Resistant Duplex Outlet/Receptacle, Grounding, Gray

15 Amp, 125 Volt, NEMA: 5-15R, Pole: 2, 3-Wire, Tamper-Resistant, Decora, Duplex Receptacle/Outlet, Straight Blade, Grounding, Quickwire Push-In & Side, Standards and Certifications: UL/CSA, Warranty: 2 Year Limited, NEC compliant - Gray

- SAFE – Tamper-resistant offers protection from electrical shocks
- DURABLE - Impact-resistant thermoplastic nylon construction
- EASY - Quickwire push-in and side wiring for easy installation
- CONVENIENT - TR symbol on strap assures they meet the latest NEC requirements

### Technical Information

#### Product Features

**Amperage :** 15 A

**Blade Type :** Straight Blade

**Color :** Gray

**Company/brand :** Decora

**Feature :** Tamper-Resistant

**Grounding :** Grounding

**NEMA :** 5-15R

**Pole :** 2

**Terminal Accom. :** Side wiring accepts #10, #12 and #14 AWG copper (CU) or #10 and #12 copper clad (CC) wire, Quickwire push-in terminals accept #14 AWG solid copper (CU) wire only

**Termination :** Quickwire Push-In & Side

**Torque Range :** 14 – 18 in.-lbs

**Type :** Duplex Receptacle

**Voltage :** 120 VAC

**Warranty :** 2 Year Limited

**Wire :** 3

#### Standards & Certifications

**CSA C22.2 No. 42 :** File 152105; Class 6233-01

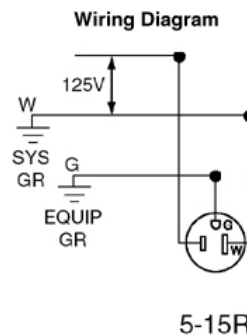
**NOM :** NOM Certified

**UL 498 :** File E13399

### Features and Benefits

- Terminal screws accept #10, #12 and #14 AWG copper (CU) or #10 and #12 copper clad (CC) wire
- Quickwire push-in terminals accept #14 AWG solid copper (CU) wire only
- Shallow depth for maximum wiring room
- Double-wipe power contacts for reliable conductivity and plug retention
- Heavy-gauge zinc-plated steel mounting strap
- Additional material added to strap to help reinforce and prevent excessive bending of the break-off tabs
- Shutter mechanism inside the receptacle blocks access to the contacts unless a two-prong plug is inserted, helping ensure hairpins, keys, etc., will be locked out
- TR symbol on strap assures they meet the latest NEC requirements
- Ultrasonic welding, heavy-duty construction offers long, trouble-free service life
- Limited 2-year warranty

## Wiring Diagram



### SPECIFICATION SUBMITTAL

JOB NAME: <input style="width: 90%;" type="text"/>	CATALOG NUMBERS: <div style="display: flex; justify-content: space-between;"> <input style="width: 45%;" type="text"/> <input style="width: 45%;" type="text"/> </div>
JOB NUMBER: <input style="width: 90%;" type="text"/>	<div style="display: flex; justify-content: space-between;"> <input style="width: 45%;" type="text"/> <input style="width: 45%;" type="text"/> </div>

#### Leviton Manufacturing Co., Inc

201 North Service Road, Melville, NY 11747

Telephone: +1-800-323-8920 · FAX: +1-800-832-9538 · Tech Line (8:30AM-7:30PM E.S.  
T. Monday-Friday): +1-800-824-3005

#### Leviton Manufacturing of Canada, Ltd.

165 Hymus Boulevard, Pointe Claire, Quebec H9R 1E9 · Telephone: +1-800-469-7890 ·  
FAX: +1-800-824-3005 · [www.leviton.com/canada](http://www.leviton.com/canada)

#### Leviton S. de R.L. de C.V.

Lago Tana 43, Mexico DF, Mexico CP 11290 · Tel.: (+52)55-5082-1040 · FAX: (+52)  
5386- 1797 · [www.leviton.com.mx](http://www.leviton.com.mx)

Visit our Website at: [www.leviton.com](http://www.leviton.com)

© 2024 Leviton Manufacturing Co., Inc. All Rights Reserved. Subject to change without notice.

**Leviton has a global presence.**

If you would like to know where your local Leviton office is located please go to:  
[www.leviton.com/international/contacts](http://www.leviton.com/international/contacts)

**© 2024 Leviton Manufacturing Co., Inc.**