



# PL-C/T

## 5PL-C/LED/13H/835/IF5/P/2P 20/1

Philips PLED 4-pin & 2-pin lamps are an affordable LED solution to replace compact fluorescent lamps. The product provides a natural lighting effect for use in many lighting applications, and provides instant energy savings, making them an environmentally-friendly solution. Available as replacements for 13W, 26W and 32W compact fluorescent lamps.

### Product data

<b>General Information</b>		<b>Temperature</b>	
Cap-Base	GX23-2	Lamp Current (Min)	15 mA
Nominal lifetime	50,000 hour(s)	Starting Time (Nom)	0.5 s
Switching Cycle	50,000	Warm-up time to 60% light	0.5 s
Lighting Technology	LED	Power Factor (Fraction)	0.9
<b>Light Technical</b>		Voltage (Nom)	120-277 V
Color Code	835 [CCT of 3500K]	UL Type	Type A - works on ballast
Beam Angle (Nom)	150 degree(s)	<b>Controls and Dimming</b>	
Luminous Flux	550 lm	Dimmable	No
Color Designation	White (WH)	<b>Mechanical and Housing</b>	
Luminous Efficacy (rated) (Nom)	110.00 lm/W	Bulb Material	Plastic
Correlated Color Temperature (Nom)	3500 K	Product Length	140 mm
Color Consistency	<6	Bulb Shape	PL-C
Color rendering index (CRI)	82	<b>Approval and Application</b>	
LLMF At End Of Nominal Lifetime (Nom)	70 %	Energy Saving Product	Yes
<b>Operating and Electrical</b>		Approval Marks	UL certificate RoHS compliance
Line Frequency	50 to 60 Hz		
Input Frequency	50 to 60 Hz		
Power Consumption	5 W		
Lamp Current (Max)	50 mA		

PL-C/T

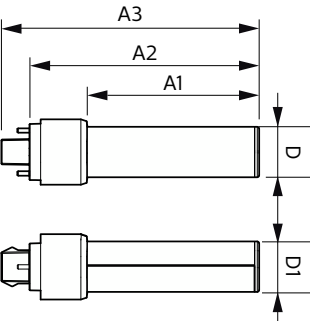
Energy Consumption kWh/1000 h	- kWh
EU RoHS compliant	Yes

Product Data

Order product name	5PL-C/LED/13H/835/IF5/P/2P 20/1
Full product name	5PL-C/LED/13H/835/IF5/P/2P 20/1
Order code	532333
Material Nr. (12NC)	929001884704

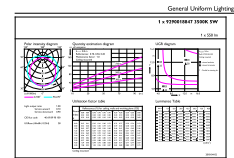
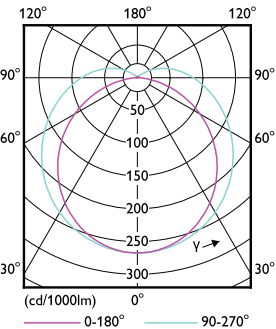
Numerator - Quantity Per Pack	1
Net Weight (Piece)	0.064 kg
EAN/UPC - Product/Case	046677532338
Numerator - Packs per outer box	20
EAN/UPC - Case	50046677532333

Dimensional drawing



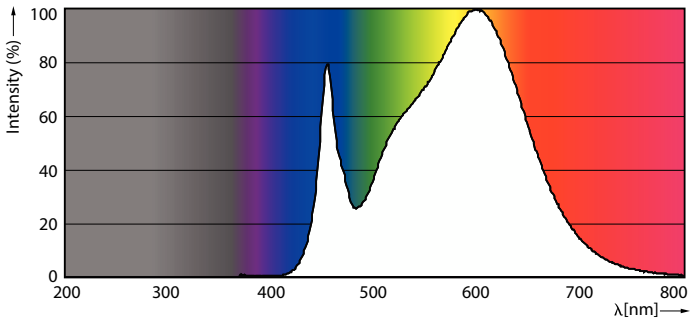
Product	D	D1	A1	A2	A3
5PL-C/LED/13H/835/IF5/P/2P 20/1	27 mm	27 mm	91.5 mm	122.4 mm	137.4 mm

Photometric data



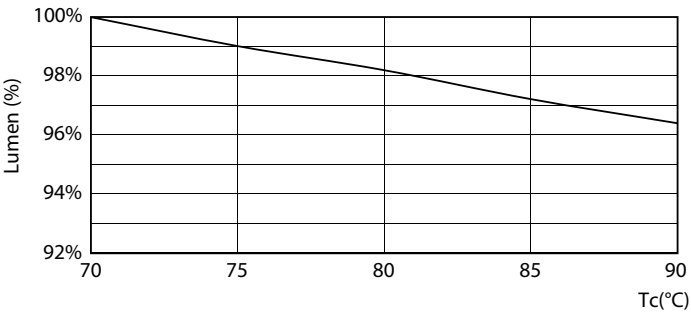
Light Distribution Diagram - 5PL-C/LED/13H/835/IF5/P/2P 20/1

General uniform lighting - 5PL-C/LED/13H/835/IF5/P/2P 20/1

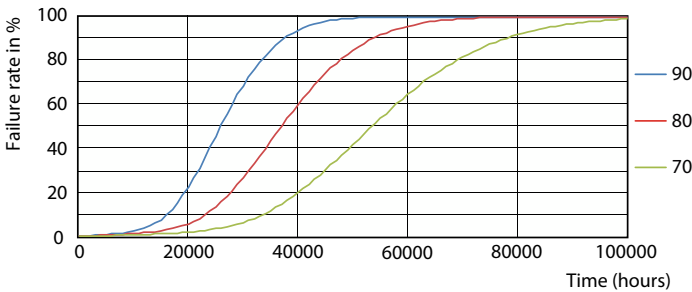


Spectral Power Distribution Colour - 5PL-C/LED/13H/835/IF5/P/2P 20/1

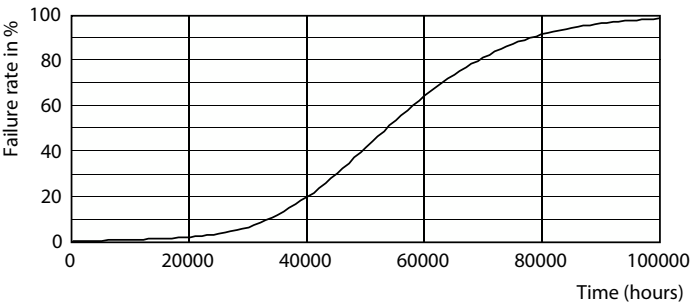
Lifetime



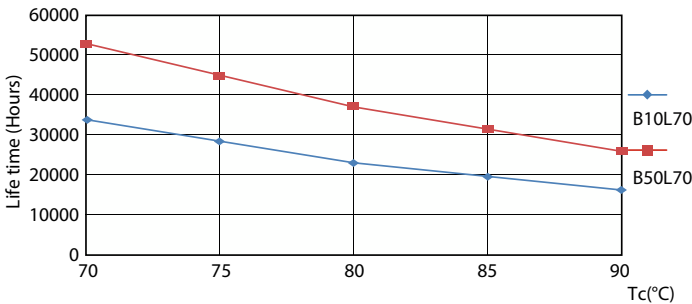
Lumen Maintenance Diagram - SPL-C/LED/13H/835/IF5/P/2P 20/1



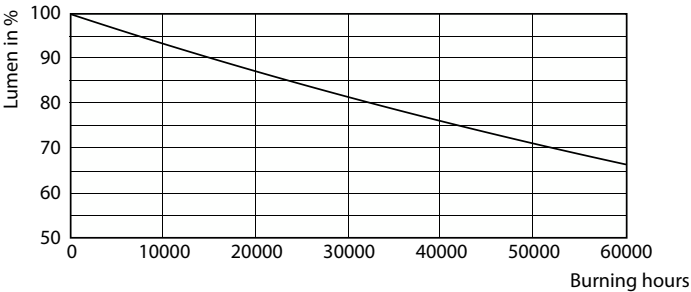
LEDtube PLC 13H 5W GX23-2 827 15D ND



LEDtube PLC 13H 5W GX23-2 827 15D ND



LEDtube PLC 13H 5W GX23-2 827 15D ND



Lumen Maintenance Diagram - SPL-C/LED/13H/835/IF5/P/2P 20/1

