



Corepro InstantFit (UL Type-A) T8

14T8/COR/48-850/IF21/G/DIM 10/1

The CorePro InstantFit LED lamps provide hassle-free installation with simple lamp-for-lamp replacements. They deliver what we promise, with at least 40% energy savings, flicker-free performance, and the life you would expect. Other lamps claim compatibility but only CorePro InstantFit (UL Type A) has been proven to work with over 200 ballasts and drivers, delivering even light output, with proven energy savings and a long average lifetime. End users will be delighted being under these comfortable and high quality CorePro InstantFit lamps with no visible flicker and optimized optics. Energy managers will enjoy these lamps too as they can count the savings delivered by our lamps. To enjoy more energy savings, the CorePro InstantFit lamps can be paired with the Advance TLED drivers to create a Type C system.

Product data

General Information		Color rendering index (CRI)		82
Lighting Technology	LED	LLMF At End Of Nominal Lifetime (Nom)		70 %
Switching Cycle	50,000	Operating and Electrical		
Nominal lifetime	70,000 hour(s)	Line Frequency	25000-105000 Hz	
Cap-Base	G13 [Medium Bi-Pin Fluorescent]	Input Frequency	25000-105000 Hz	
Light Technical		Power Consumption	14 W	
Color Code	850 [CCT of 5000K]	Wattage Equivalent	32 W	
Beam Angle (Nom)	240 degree(s)	Starting Time (Nom)	0.5 s	
Luminous Flux	2,100 lumen	Warm-up time to 60% light	0.5 s	
Color Designation	Daylight	Power Factor (Fraction)	0.9	
Correlated Color Temperature (Nom)	5000 K	Voltage (Nom)	120-277, 347 V	
Luminous Efficacy (rated) (Nom)	150.00 lm/W			
Color Consistency	<5			

Corepro InstantFit (UL Type-A) T8

Temperature

Ambient temperature range	-20 °C to 45 °C
T-Case Maximum (Nom)	50 °C

Controls and Dimming

Dimmable	Yes
----------	-----

Mechanical and Housing

Bulb Finish	Frosted
Bulb Material	Glass
Product Length	1,200 mm
Bulb Shape	Tube, double-ended

Approval and Application

Energy Saving Product	Yes
Approval Marks	UL certificate RoHS compliance DLC compliance

Energy Consumption kWh/1000 h	- kWh
-------------------------------	-------

Energy Certifications	DLC Standard
-----------------------	--------------

EU RoHS compliant	Yes
-------------------	-----

Product Data

Order product name	14T8/COR/48-850/IF21/G/DIM 10/1
--------------------	---------------------------------

Order code	470120
------------	--------

Numerator - Quantity Per Pack	1
-------------------------------	---

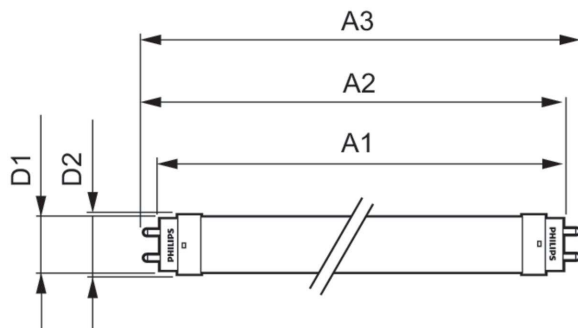
Numerator - Packs per outer box	10
---------------------------------	----

Material number (12NC)	929001343334
------------------------	--------------

Full product name	14T8/COR/48-850/IF21/G/DIM 10/1
-------------------	---------------------------------

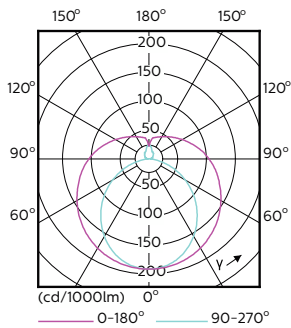
EAN/UPC - Case	50046677470123
----------------	----------------

Dimensional drawing

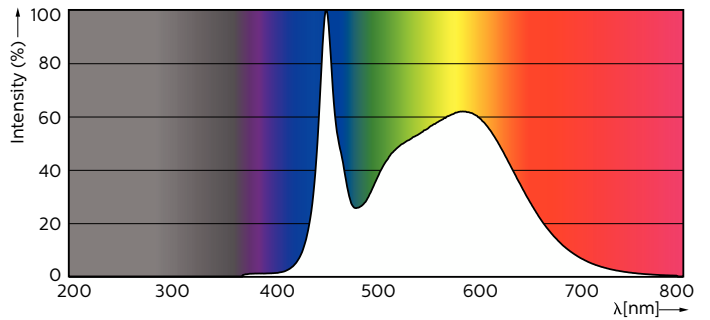


Product	D1	D2	A1	A2	A3
14T8/COR/48-850/IF21/G/DIM 10/1	25.7 mm	28 mm	1,198 mm	1,205 mm	1,212 mm

Photometric data



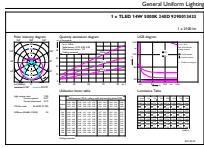
Light Distribution Diagram - 14T8/COR/48-850/IF21/G/DIM 10/1



Spectral Power Distribution Colour - 14T8/COR/48-850/IF21/G/DIM 10/1

Corepro InstantFit (UL Type-A) T8

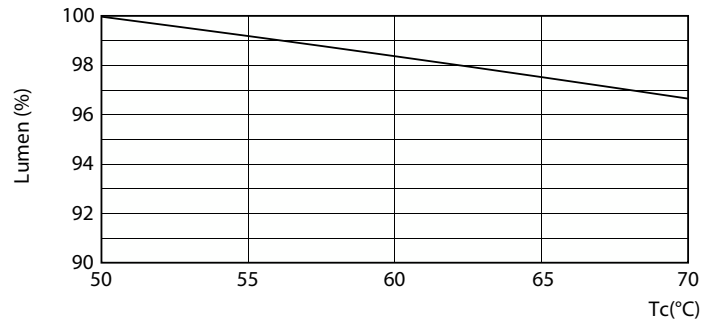
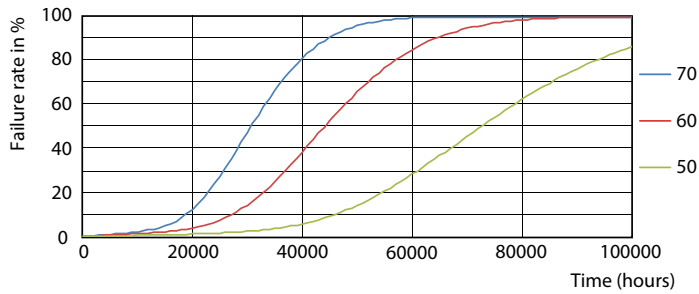
Photometric data



General Uniform Lighting - 14T8/COR/48-850/IF21/G/DIM 10/1

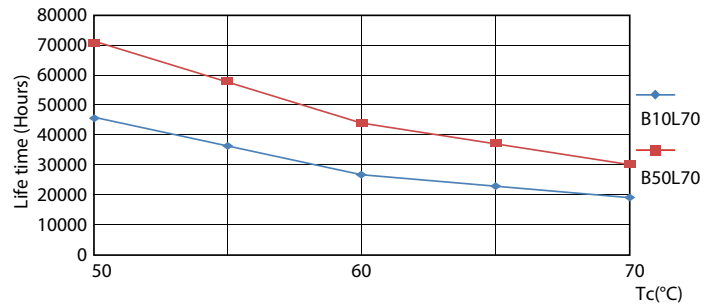
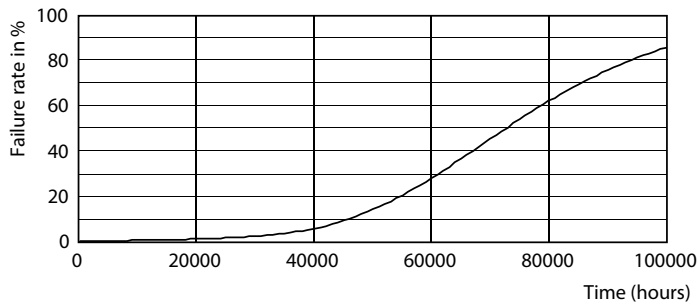
General uniform lighting - 14T8/COR/48-850/IF21/G/DIM 10/1

Lifetime



Life Expectancy Diagram - 14T8/COR/48-850/IF21/G/DIM 10/1

Lumen Maintenance Diagram - 14T8/COR/48-850/IF21/G/DIM 10/1

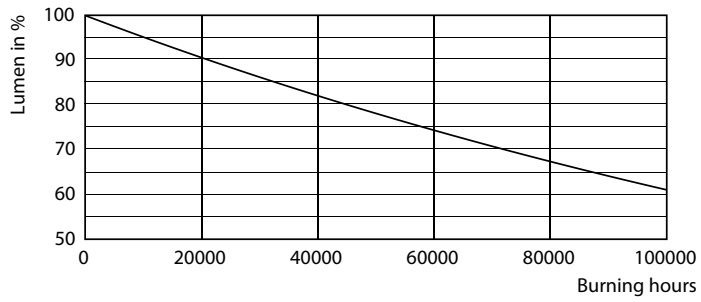


Life Expectancy Diagram - 14T8/COR/48-850/IF21/G/DIM 10/1

Life Expectancy Diagram - 14T8/COR/48-850/IF21/G/DIM 10/1

Corepro InstantFit (UL Type-A) T8

Lifetime



Lumen Maintenance Diagram - 14T8/COR/48-850/IF21/G/DIM 10/1

