



InstantFit (UL Type-A) T5

14T5HE/46-835/IF20/G/DIM 10/1

The InstantFit TLED lamps provide hassle-free installation with simple lamp-for-lamp replacements. They deliver what we promise, with at least 40% energy savings, flicker-free performance, and the life you would expect. Other lamps claim compatibility but only InstantFit (UL Type-A) has been proven to work with over 200 ballasts and drivers, delivering even light output, with proven energy savings and a long average lifetime. End users will be delighted being under these comfortable and high quality InstantFit lamps with no visible flicker and optimized optics. Energy managers will enjoy the InstantFit lamps too as they can count the savings delivered by our lamps. To enjoy more energy savings, the InstantFit lamps can be paired with the Advance TLED drivers to create a Type C system.

Product data

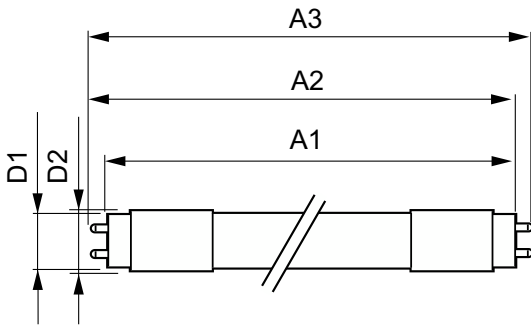
General Information		LLMF At End Of Nominal Lifetime (Nom) 70 %	
Lighting Technology	LED		
Switching Cycle	50,000		
Nominal lifetime	50,000 hour(s)		
Cap-Base	G5 [G5]		
Light Technical		Operating and Electrical	
Color Code	835 [CCT of 3500K]	Line Frequency	40000-110000 Hz
Beam Angle (Nom)	200 degree(s)	Input Frequency	40000-110000 Hz
Luminous Flux	2,000 lumen	Power Consumption	14 W
Color Designation	White (WH)	Wattage Equivalent	28 W
Correlated Color Temperature (Nom)	3500 K	Starting Time (Nom)	0.5 s
Luminous Efficacy (rated) (Nom)	142.00 lm/W	Warm-up time to 60% light	0.5 s
Color Consistency	<6	Power Factor (Fraction)	0.9
Color rendering index (CRI)	82	Voltage (Nom)	70-105 V
		Temperature	
		Ambient temperature range	-20 °C to 45 °C

InstantFit (UL Type-A) T5

T-Case Maximum (Nom)	70 °C
Controls and Dimming	
Dimmable	Yes
Mechanical and Housing	
Bulb Finish	Frosted
Bulb Material	Glass
Product Length	1,200 mm
Bulb Shape	Tube, double-ended
Approval and Application	
Energy Saving Product	Yes
Approval Marks	UL certificate RoHS compliance DLC compliance

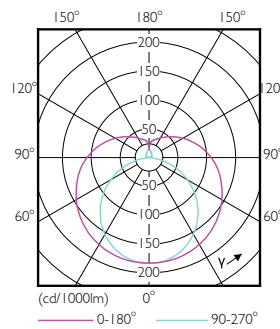
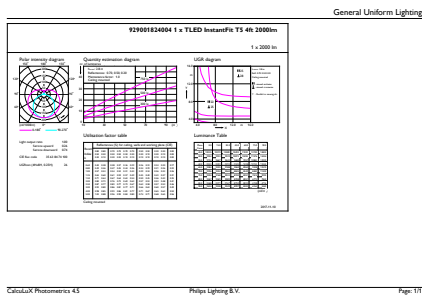
Energy Consumption kWh/1000 h	- kWh
Energy Certifications	DLC Standard
EU RoHS compliant	Yes
Product Data	
Order product name	14T5HE/46-835/IF20/G/DIM 10/1
Order code	476507
Numerator - Quantity Per Pack	1
Numerator - Packs per outer box	10
Material number (12NC)	929001824004
Full product name	14T5HE/46-835/IF20/G/DIM 10/1
EAN/UPC - Case	50046677476507

Dimensional drawing



Product	D1	D2	A1	A2	A3
14T5HE/46-835/IF20/G/DIM 10/1	15.3 mm	18.4 mm	1,147.8 mm	1,154.9 mm	1,162 mm

Photometric data

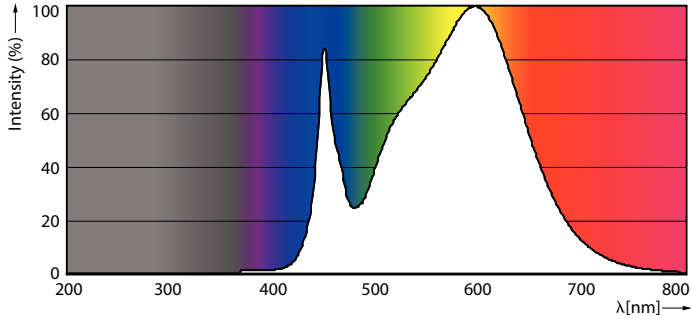


General uniform lighting - 14T5HE/46-835/IF20/G/DIM 10/1

Light Distribution Diagram - 14T5HE/46-835/IF20/G/DIM 10/1

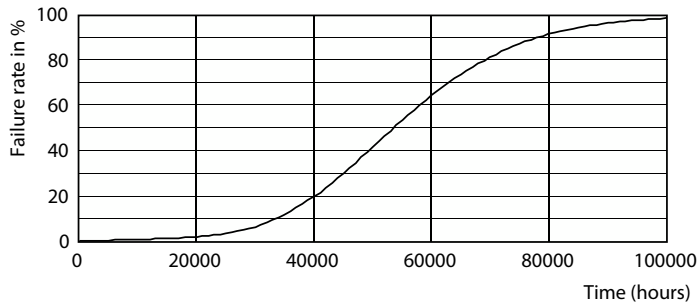
InstantFit (UL Type-A) T5

Photometric data

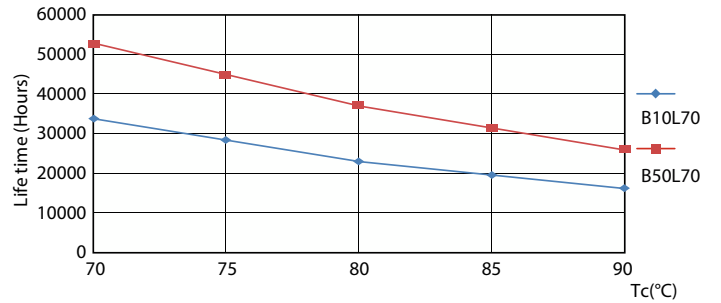


Spectral Power Distribution Colour - 14T5HE/46-835/IF20/G/DIM 10/1

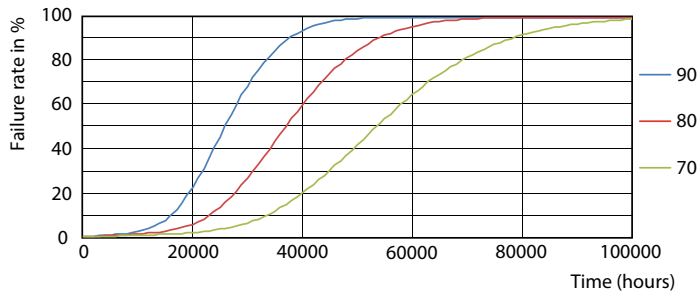
Lifetime



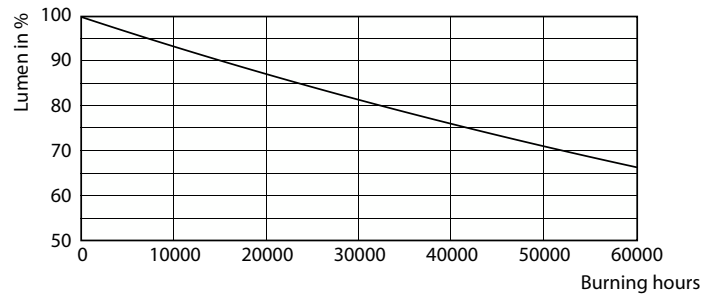
Life Expectancy Diagram - 14T5HE/46-835/IF20/G/DIM 10/1



Life Expectancy Diagram - 14T5HE/46-835/IF20/G/DIM 10/1



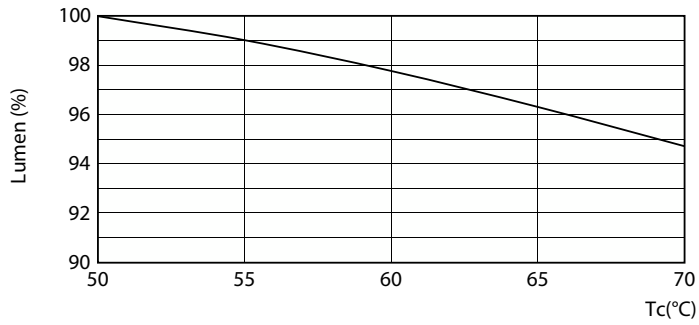
Life Expectancy Diagram - 14T5HE/46-835/IF20/G/DIM 10/1



Lumen Maintenance Diagram - 14T5HE/46-835/IF20/G/DIM 10/1

InstantFit (UL Type-A) T5

Lifetime



Lumen Maintenance Diagram - 14T5HE/46-835/IF20/G/DIM 10/1

