

MasterClass InstantFit (UL Type- A) T8

13T8/MAS/48-835/IF20/P/DIM 10/1

The MasterClass InstantFit T8 lamps provide hassle-free installation with simple lamp-for-lamp replacements. They deliver what we promise, with at least 40% energy savings, flicker-free performance, and the life you would expect. Other lamps claim compatibility but only MasterClass InstantFit (UL Type A) has been proven to work with over 200 ballasts and drivers, delivering even light output, with proven energy savings and a long average lifetime. End users will be delighted being under these comfortable and high quality lamps with no visible flicker and optimized optics. Energy managers will enjoy these lamps too as they can count the savings delivered by our lamps. To enjoy more energy savings, the MasterClass InstantFit lamps can be paired with the Advance TLED drivers to create a Type C system. With available 70,000 hour life, 7-year limited warranty and a shatter-prevention polycarbonate lens, Philips MasterClass InstantFit TLED lamps deliver benefits for all.

Product data

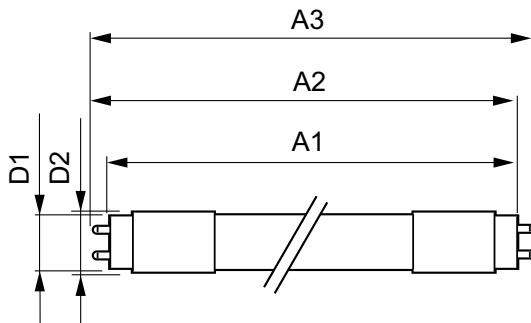
General Information		Light Technical	
Lighting Technology	LED	Luminous Flux	2,000 lumen
Switching Cycle	50,000	Color Designation	White (WH)
Nominal lifetime	70,000 hour(s)	Correlated Color Temperature (Nom)	3500 K
Cap-Base	G13 [Medium Bi-Pin Fluorescent]	Luminous Efficacy (rated) (Nom)	153 lm/W
		Color Consistency	<6
		Color rendering index (CRI)	80
		LLMF At End Of Nominal Lifetime (Nom)	70 %
Color Code	835 [CCT of 3500K]		
Beam Angle (Nom)	180 degree(s)		

MasterClass InstantFit (UL Type-A) T8

Operating and Electrical	
Line Frequency	20K to 120K Hz
Input Frequency	20K to 120K Hz
Power Consumption	13 W
Starting Time (Nom)	0.5 s
Warm-up time to 60% light	0.5 s
Power Factor (Fraction)	0.9
Voltage (Nom)	120-277,347 V
Temperature	
Ambient temperature range	-20 °C to 45 °C
T-Case Maximum (Nom)	40 °C
Controls and Dimming	
Dimmable	Only with specific dimmers
Mechanical and Housing	
Bulb Finish	Frosted
Bulb Material	Plastic
Product Length	1,200 mm

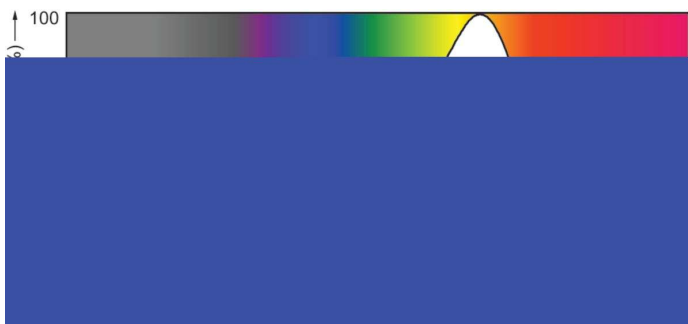
Bulb Shape	Tube, double-ended
Approval and Application	
Energy Saving Product	Yes
Approval Marks	RoHS compliance UL certificate DLC compliance
Energy Consumption kWh/1000 h	- kWh
Energy Certifications	DLC Standard
EU RoHS compliant	Yes
Product Data	
Order product name	13T8/MAS/48-835/IF20/P/DIM 10/1
Order code	473934
Numerator - Quantity Per Pack	1
Numerator - Packs per outer box	10
Material number (12NC)	929001397734
Full product name	13T8/MAS/48-835/IF20/P/DIM 10/1
EAN/UPC - Case	50046677473933

Dimensional drawing

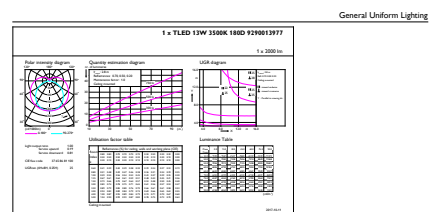


Product	D1	D2	A1	A2	A3
13T8/MAS/48-835/IF20/P/DIM 10/1	25.7 mm	26.3 mm	1,198.1 mm	1,205.2 mm	1,212.3 mm

Photometric data



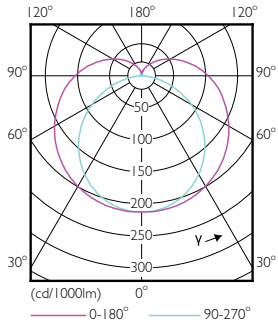
Spectral Power Distribution Colour - 13T8/MAS/48-835/IF20/P/DIM 10/1



General uniform lighting - 13T8/MAS/48-835/IF20/P/DIM 10/1

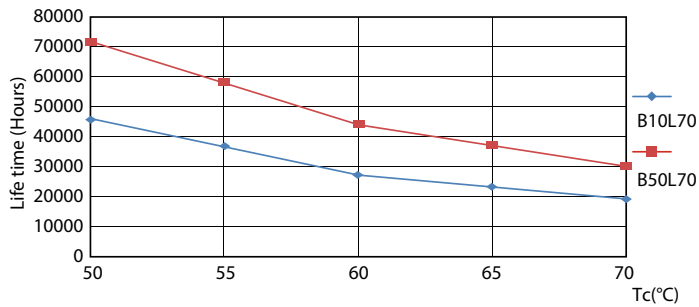
MasterClass InstantFit (UL Type-A) T8

Photometric data

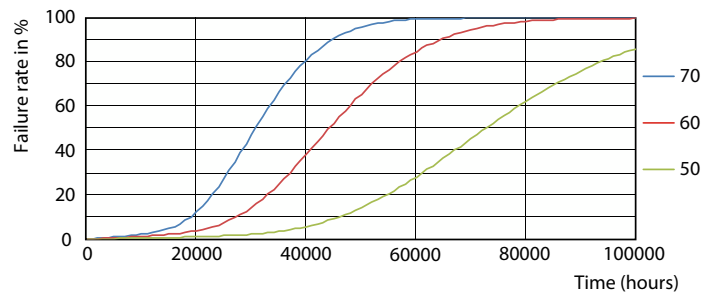


Light Distribution Diagram - 13T8/MAS/48-835/IF20/P/DIM 10/1

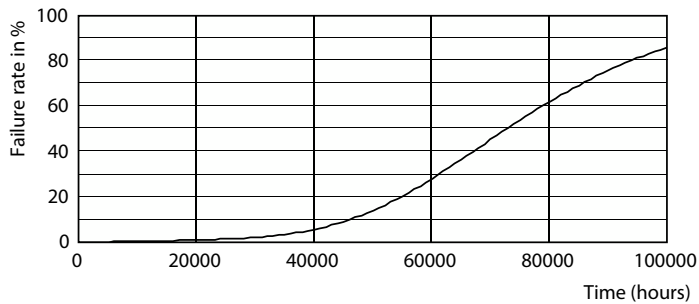
Lifetime



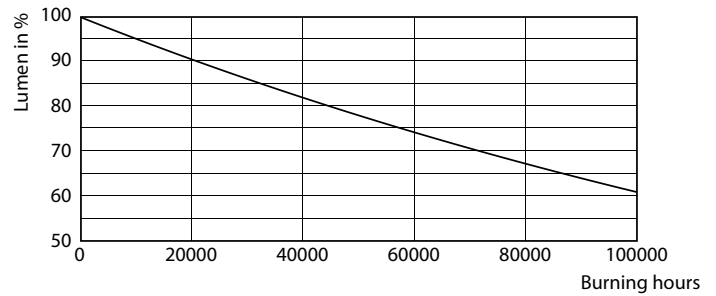
Life Expectancy Diagram - 13T8/MAS/48-835/IF20/P/DIM 10/1



Life Expectancy Diagram - 13T8/MAS/48-835/IF20/P/DIM 10/1



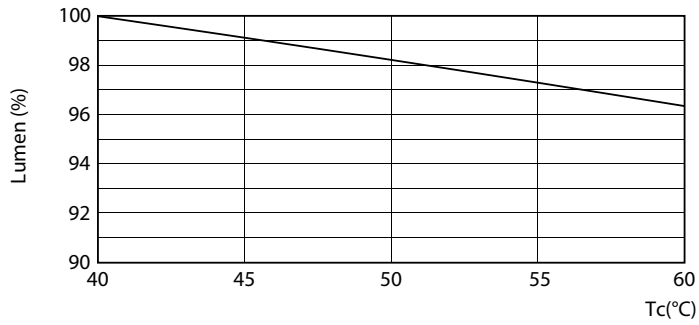
Life Expectancy Diagram - 13T8/MAS/48-835/IF20/P/DIM 10/1



Lumen Maintenance Diagram - 13T8/MAS/48-835/IF20/P/DIM 10/1

MasterClass InstantFit (UL Type-A) T8

Lifetime



Lumen Maintenance Diagram - 13T8/MAS/48-835/IF20/P/DIM 10/1

