



# InstantFit (UL Type-A) T5

## 11T5HE/34-830/IF14/G/DIM 10/1

The InstantFit TLED lamps provide hassle-free installation with simple lamp-for-lamp replacements. They deliver what we promise, with at least 40% energy savings, flicker-free performance, and the life you would expect. Other lamps claim compatibility but only InstantFit (UL Type-A) has been proven to work with over 200 ballasts and drivers, delivering even light output, with proven energy savings and a long average lifetime. End users will be delighted being under these comfortable and high quality InstantFit lamps with no visible flicker and optimized optics. Energy managers will enjoy the InstantFit lamps too as they can count the savings delivered by our lamps. To enjoy more energy savings, the InstantFit lamps can be paired with the Advance TLED drivers to create a Type C system.

### Product data

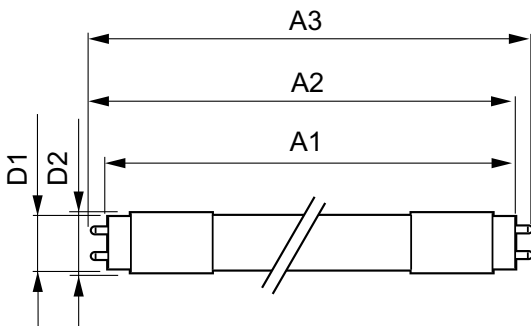
General Information		LLMF At End Of Nominal Lifetime (Nom)	
Lighting Technology	LED		70 %
Switching Cycle	50,000	<b>Operating and Electrical</b>	
Nominal lifetime	50,000 hour(s)	Line Frequency	40000-110000 Hz
Cap-Base	G5 [G5]	Input Frequency	40000-110000 Hz
<b>Light Technical</b>		Power Consumption	11 W
Color Code	830 [CCT of 3000K]	Wattage Equivalent	21 W
Beam Angle (Nom)	200 degree(s)	Starting Time (Nom)	0.5 s
Luminous Flux	1,400 lumen	Warm-up time to 60% light	0.5 s
Color Designation	White (WH)	Power Factor (Fraction)	0.9
Correlated Color Temperature (Nom)	3000 K	Voltage (Nom)	50-80 V
Luminous Efficacy (rated) (Nom)	127.00 lm/W	<b>Temperature</b>	
Color Consistency	<6	Ambient temperature range	-20 °C to 45 °C
Color rendering index (CRI)	82		

# InstantFit (UL Type-A) T5

T-Case Maximum (Nom)	70 °C
<b>Controls and Dimming</b>	
Dimmable	Yes
<b>Mechanical and Housing</b>	
Bulb Finish	Frosted
Bulb Material	Glass
Product Length	900 mm
Bulb Shape	Tube, double-ended
<b>Approval and Application</b>	
Energy Saving Product	Yes
Approval Marks	UL certificate RoHS compliance

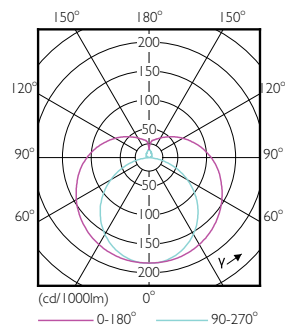
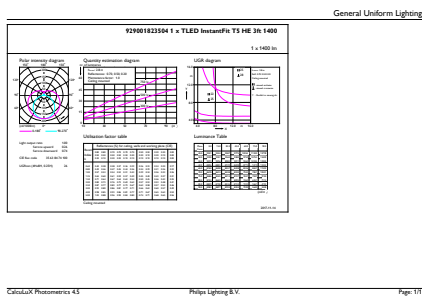
Energy Consumption kWh/1000 h	- kWh
EU RoHS compliant	Yes
<b>Product Data</b>	
Order product name	11T5HE/34-830/IF14/G/DIM 10/1
Order code	929001823504
Numerator - Quantity Per Pack	1
Numerator - Packs per outer box	10
Material number (12NC)	929001823504
Full product name	11T5HE/34-830/IF14/G/DIM 10/1
EAN/UPC - Case	50046677476453

## Dimensional drawing



Product	D1	D2	A1	A2	A3
11T5HE/34-830/IF14/G/DIM 10/1	15.3 mm	18.4 mm	847.8 mm	854.9 mm	862 mm

## Photometric data

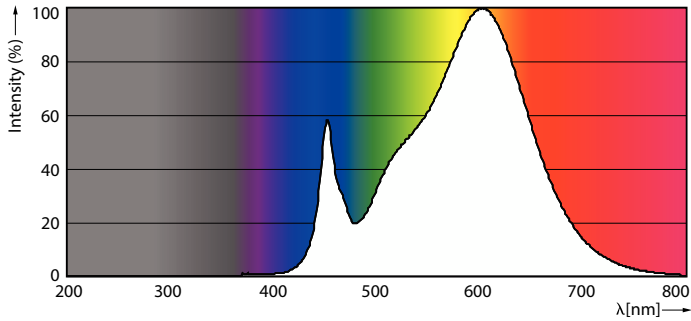


General uniform lighting - 11T5HE/34-830/IF14/G/DIM 10/1

Light Distribution Diagram - 11T5HE/34-830/IF14/G/DIM 10/1

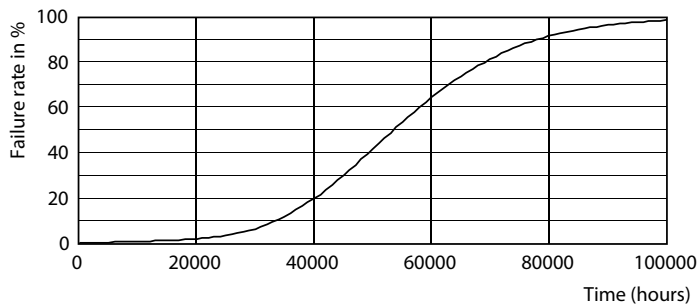
# InstantFit (UL Type-A) T5

## Photometric data

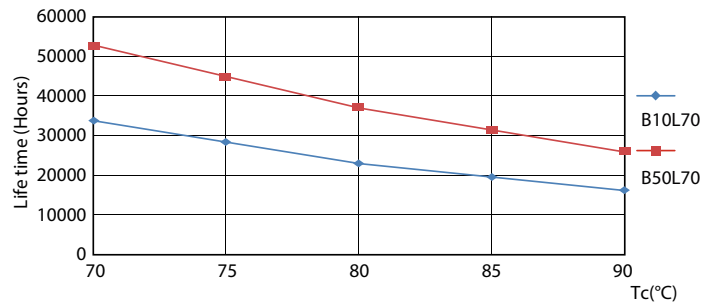


Spectral Power Distribution Colour - 11T5HE/34-830/IF14/G/DIM 10/1

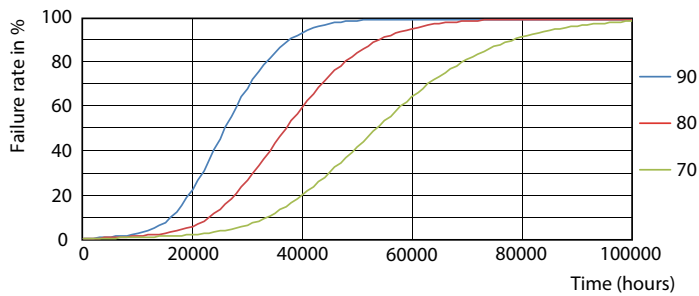
## Lifetime



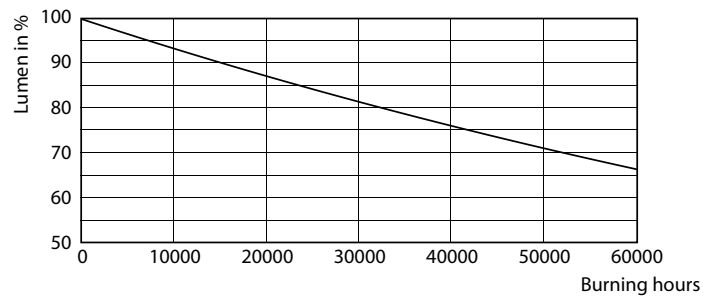
Life Expectancy Diagram - 11T5HE/34-830/IF14/G/DIM 10/1



Life Expectancy Diagram - 11T5HE/34-830/IF14/G/DIM 10/1



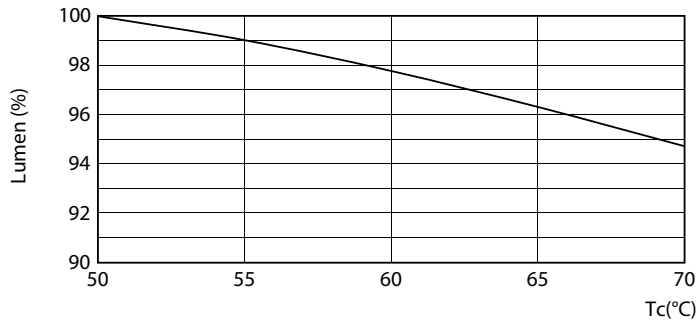
Life Expectancy Diagram - 11T5HE/34-830/IF14/G/DIM 10/1



Lumen Maintenance Diagram - 11T5HE/34-830/IF14/G/DIM 10/1

## InstantFit (UL Type-A) T5

### Lifetime



Lumen Maintenance Diagram - 11T5HE/34-830/IF14/G/DIM 10/1

